

WallTech

2016

# Cargoware Platform



A Global FORWARDER Management System

Stewen Wu





## Freight forwarding company operation instruments



Complete business module, support for the day-to-day electronic operations



Wide range of in-built business templates, supporting multi-means of template sets and sharing, improve work efficiency



Rigorous business chain control, implementation process from sales to final financial



Management integrity, support business management needs from all angles like business report, permissions and process



Automation of business-related documents, papers, letters saved management to facilitate business dates back and business information sharing



## Freight forwarding company internal and external collaboration platform



Business Instant Messaging function like eChat, flow control and customer classification support needs of internal collaboration



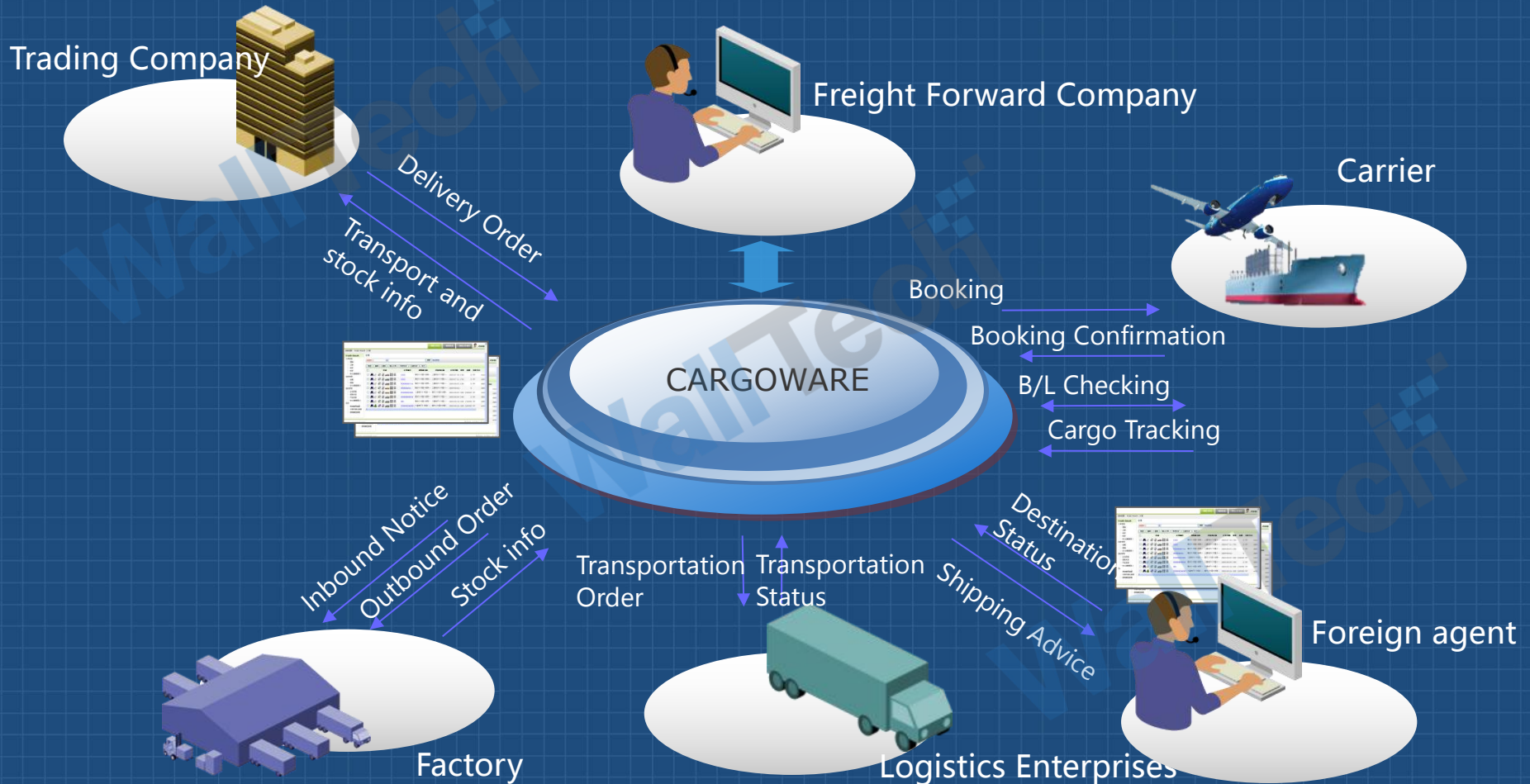
Functions like online order, reconciliation, remote booking, freight forwarding warehouse EDI, online B2B realize operational synergies with partners, customers, and enhance the efficiency of operations and communication



**Freight operation and management of A complete product system of freight operation and management** (including business, e-commerce, BI, mobile applications, and so on)



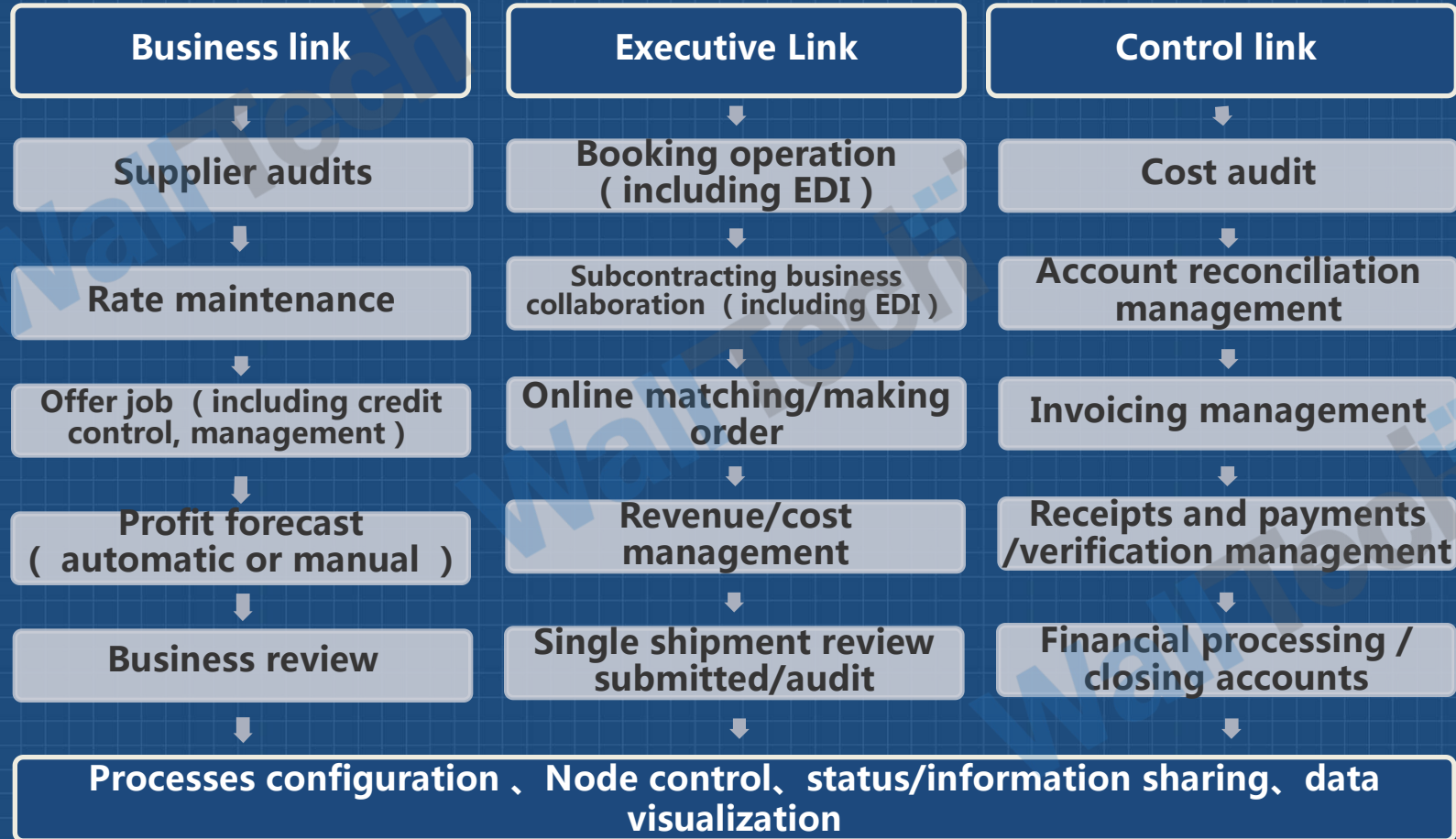
# Walltech CargoWare





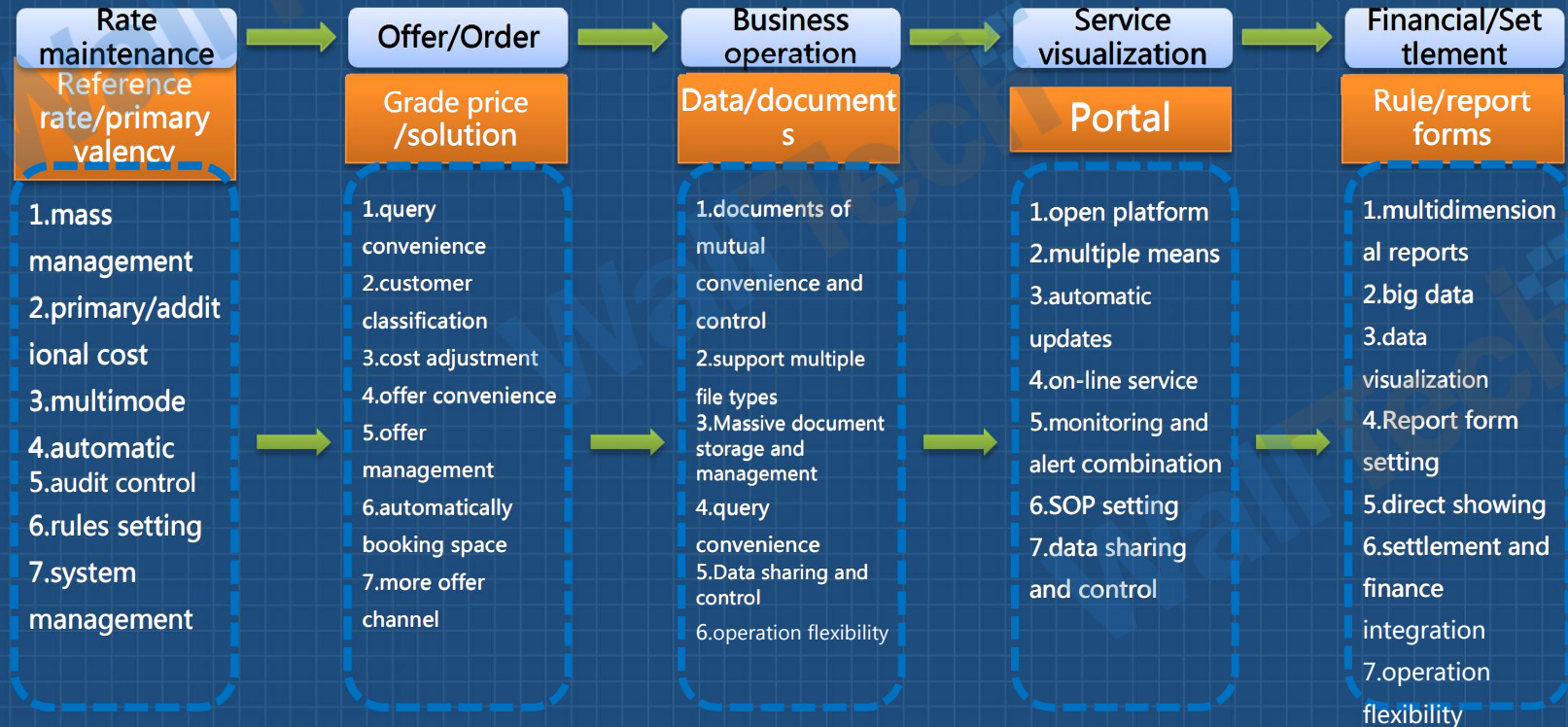






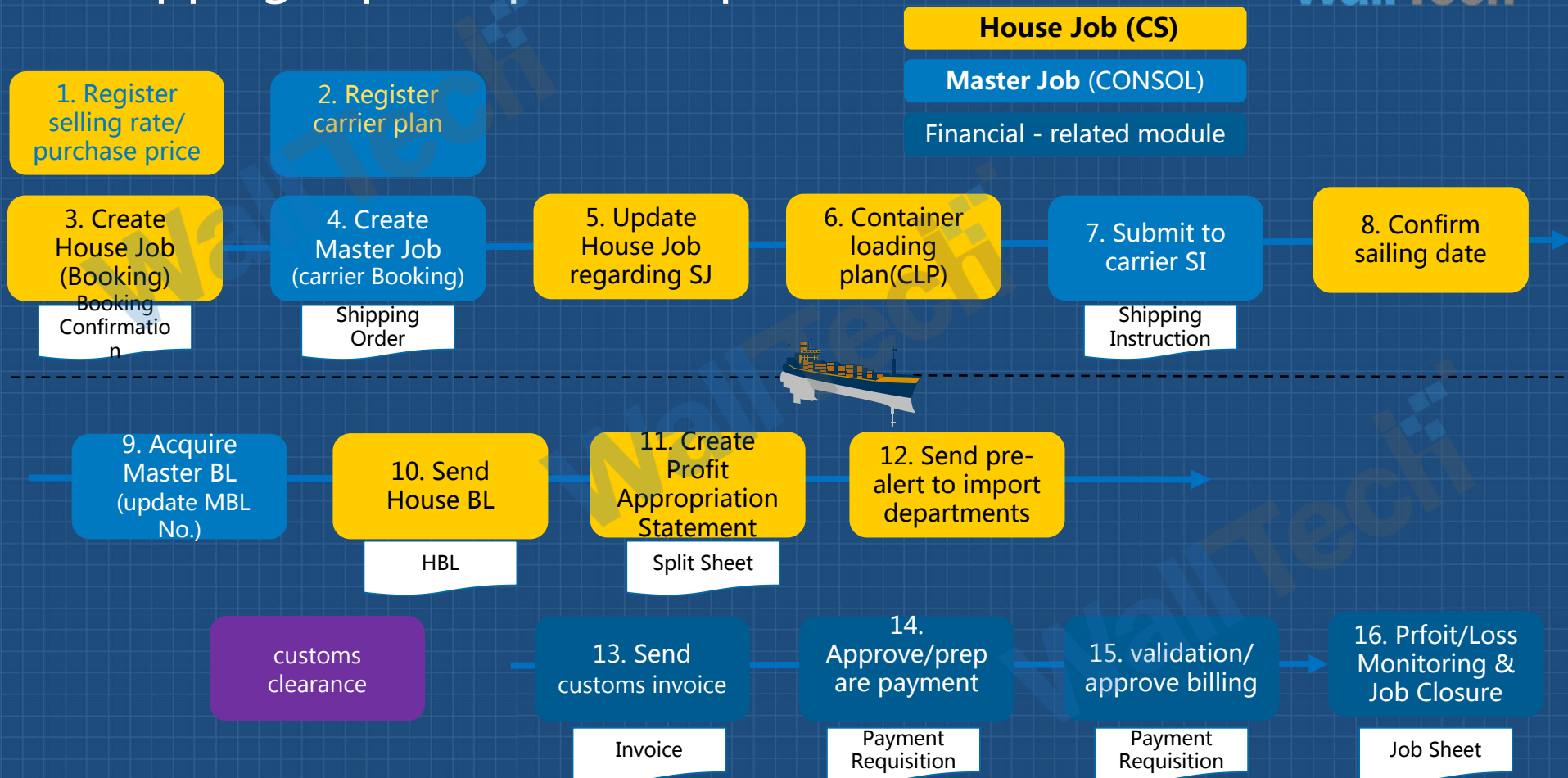


As a business which needs to integrate multiple partners, service objects, documents, links and regulators, matching control at different nodes is necessary





# Shipping export operation process





# Shipping import operation process

1. Check entry orders

2. Confirm pre-alert

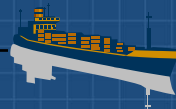
3. Release arrival notice

Arrival Notice

House Job (CS)

Master Job (CONSOL)

Financial - related module



4. Confirm arrival

customs clearance

5. Release arrival container and transport

Authorization Release

Work Order

6. Confirm delivery

7. Approve/prepare payment

Invoice

8. Validation/approve billing

Payment Requisition

9. Send customer invoice

Payment Requisition

10. Profit/Loss Monitoring & Job Closure

Job Sheet







# Sales application





# Customer Collaboration/Service Application



电子报价单  
Sending&Confirm



提单/AMS  
Confirm on line



账单/对账单  
Sending&Confirm



订单执行信息  
Automatic notify



B2B平台  
Tracking & Sharing



## Credit control mechanisms



Credit control rule setting

- Business classification
- Set operational control
- Set controlled operation authority
- Set signal trigger notification mechanism
- .....



Customer credit policy setting



credit line



account period



settlement type



signal control model



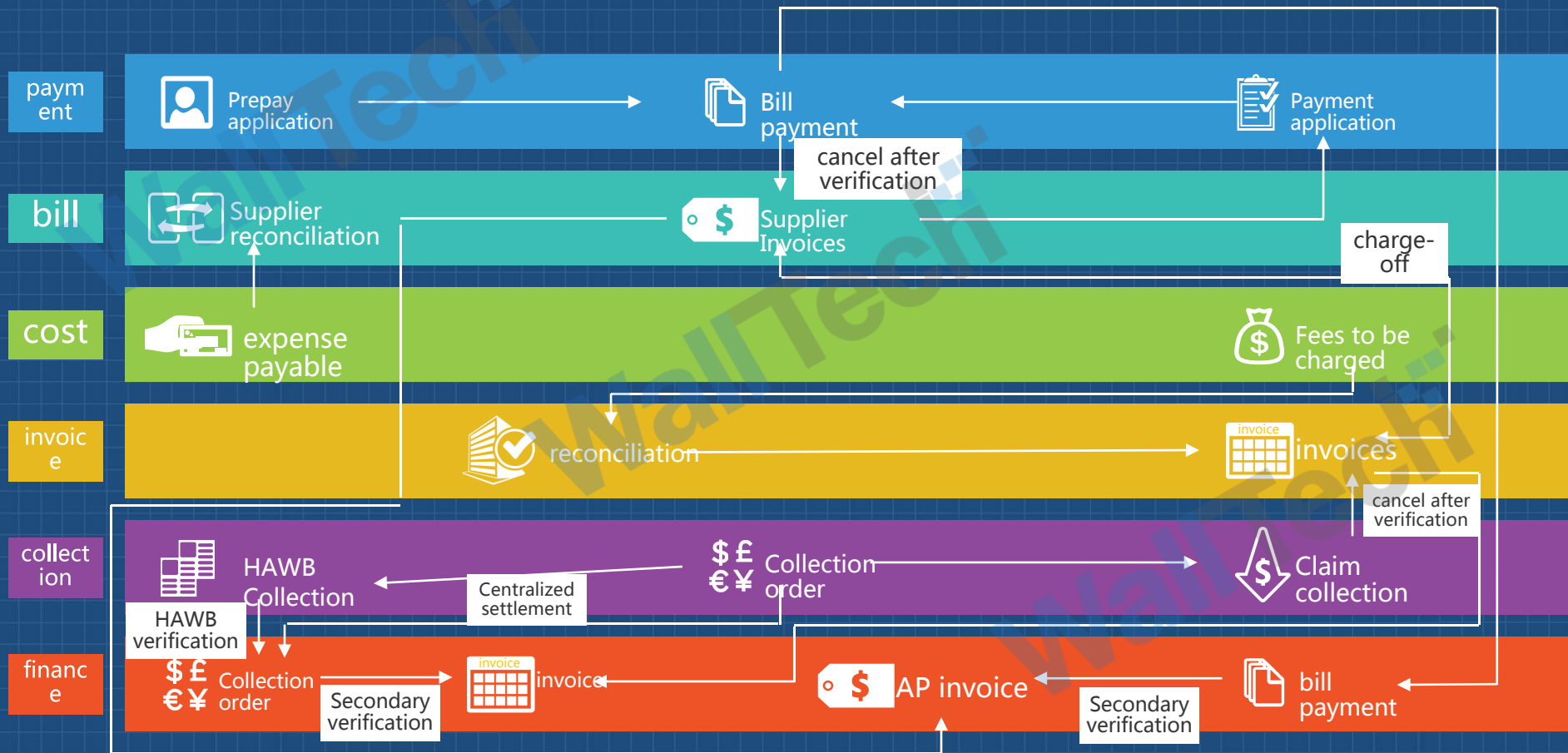
Credit tools application

- Hedging、Lock customer、Lock release...
- Extended Cost Management ( audit )
- Customer special operation
- Signal control trace
- Accounts receivable and payable netting
- .....

Realize signal control through basic setting, customer classification and operation control



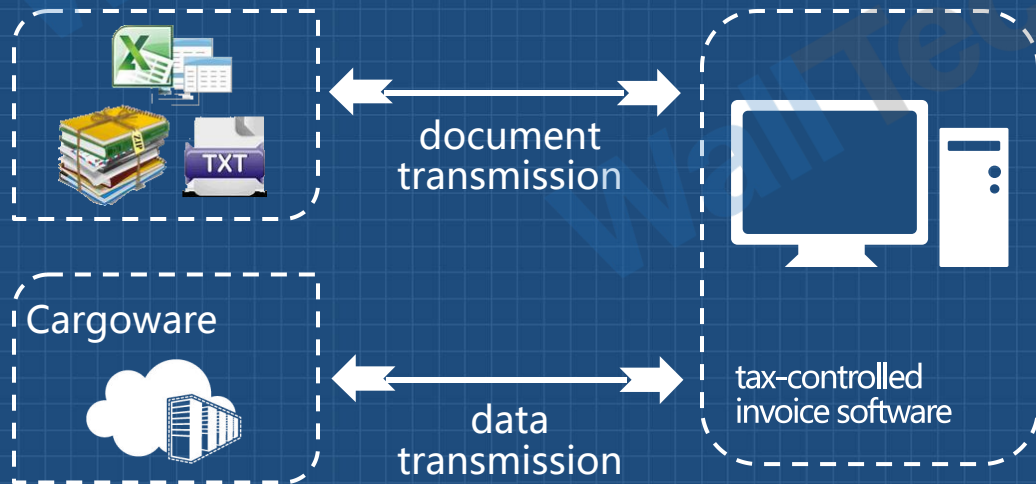
# Settlement management application





# Integrate with tax-controlled invoice software

- ✓ Invoicing directly in Cargoware
- ✓ Monitoring import&export results
- ✓ Automatically processing background service
- ✓ Improving efficiency



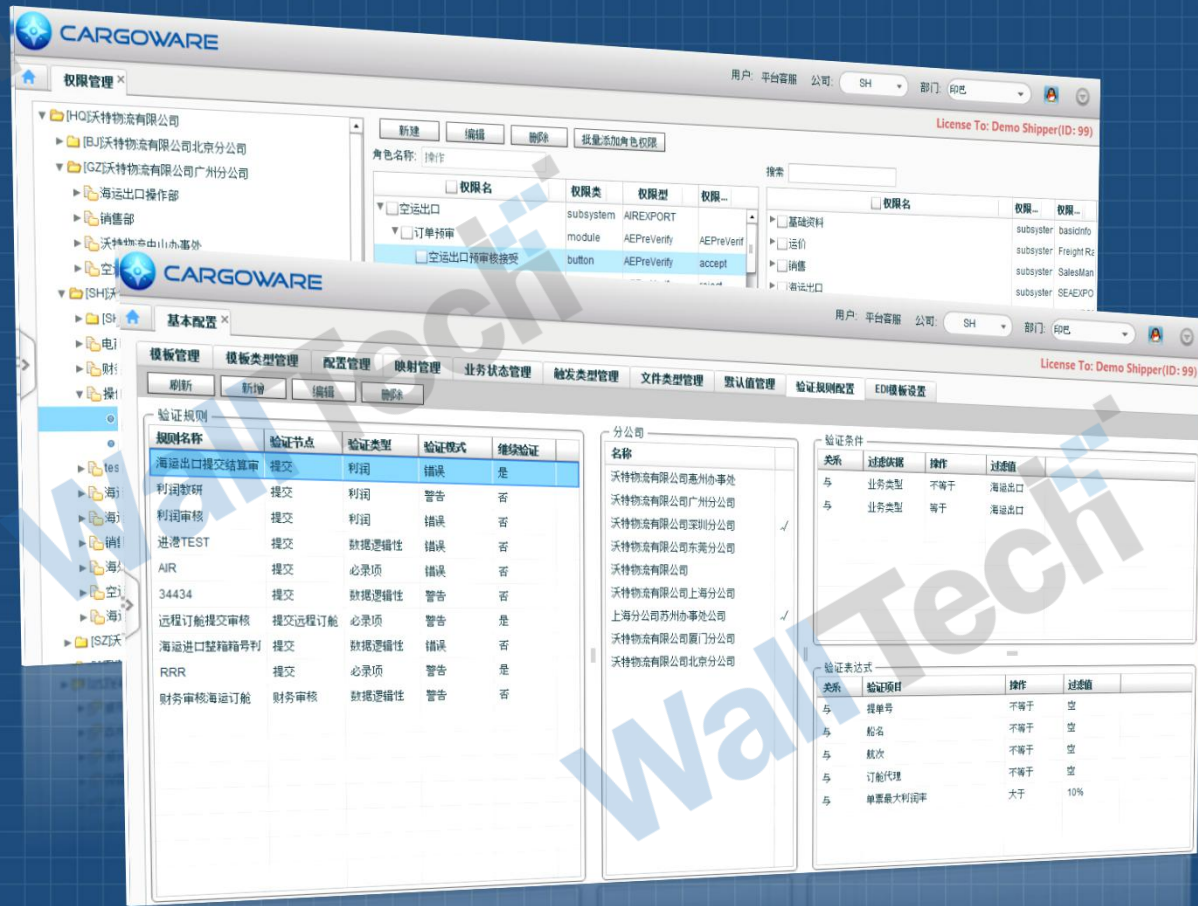
- **Module one** : transmit invoice data to Jinshui system through importing& exporting files of Excel / Txt / CSV format, and transmit invoice No. back to Cargoware in the same way
- **Module two** : implement one-key operation in Cargoware through customizing interface, automatically send invoice data and require invoice No. without manual intervention



# Configuration and Validation Management Settings

With a good configuration of the system, Cargoware can meet the individual needs of the enterprise and quickly adapt to future business or system needs:

- Easy organization configure permissions, and rigorous control mechanisms
- Subdivide the classification management and control needs of different business type
- Business processes can be flexibly adjusted
- Business module configuration setting satisfy the needs of high efficiency
- Automatically validate, reduce error or omission in operation and work load of director's auditing ( especially detailed auditing )

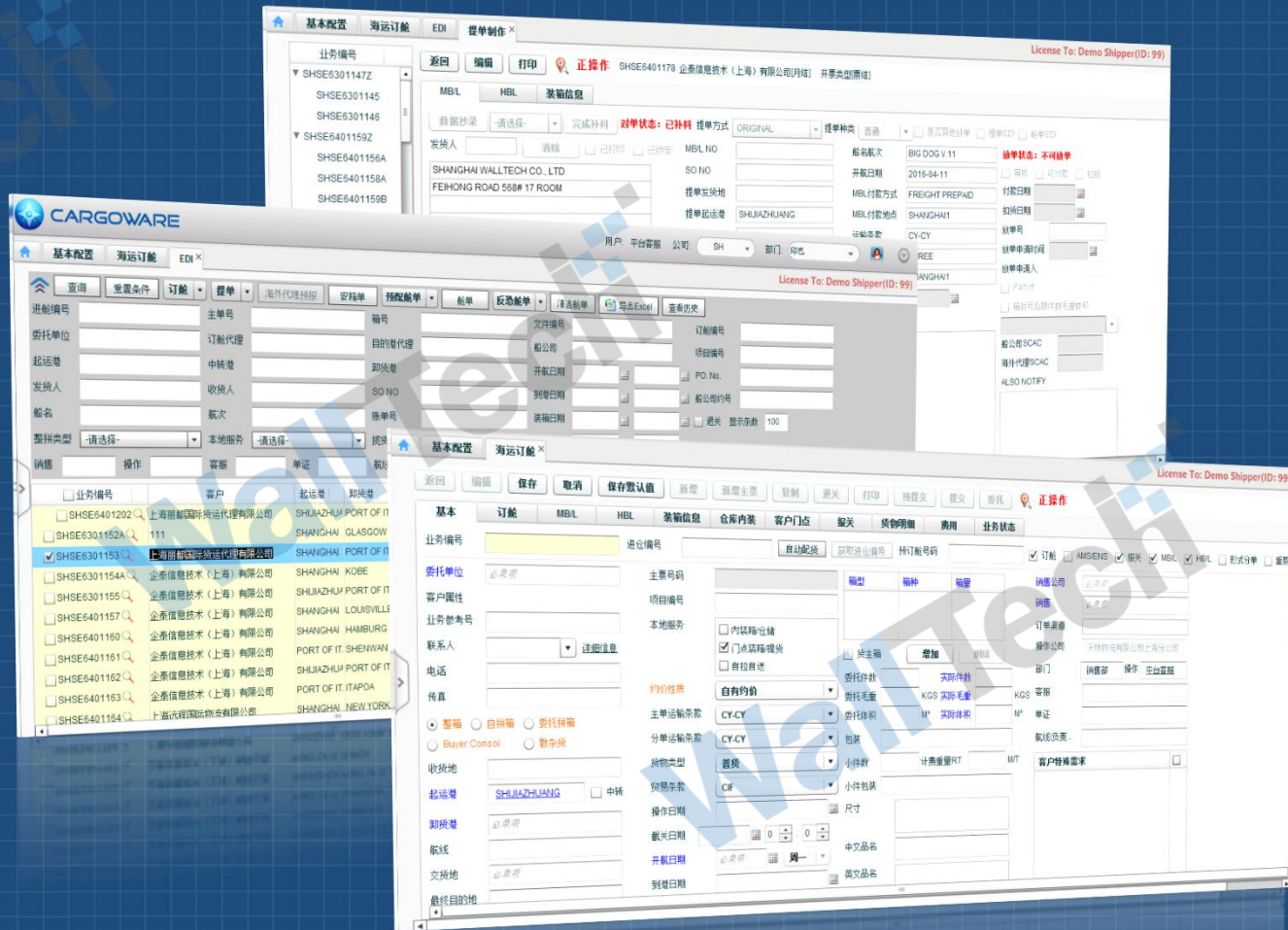




# Operation Function Module

With completed operation functions and wide coverage, Cargoware can meet the application needs of medium or large freight forwarder :

- Easily satisfy the needs of sea freight and air import& export, freight value - added services and even project logistics and international supply chain management applications
- Operation can be configured as simple or rigorous to satisfy different management requirements
- Integrate various EDI and module tools to improve operation efficiency
- All documents and emails can be automatically saved on cloud platform to satisfy the needs of sharing, inquiring and reviewing

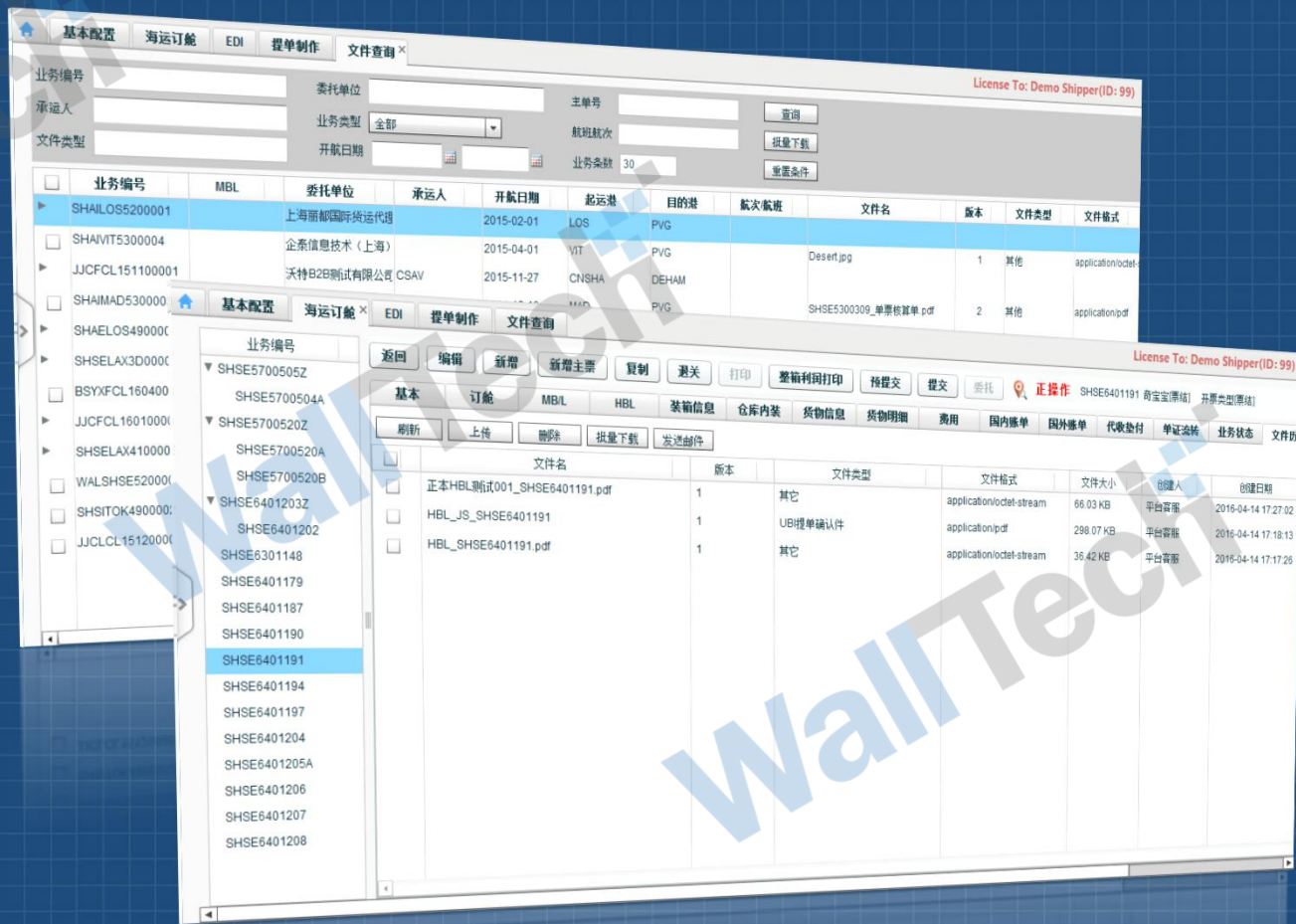




# Centralized Document Management Module

With centralized document management, Cargoware highly improve management and operation efficiency:

- Support documents to be directly saved on Cargoware platform in classification
- Support in centrally saving contracts
- Support in classified saving external electronic documents under related service
- Support in batch faxing and emailing electronic files
- Cloud storage mode and special storage mechanism, not only guarantee the needs of saving mass files but also reduce the effect on system and operation



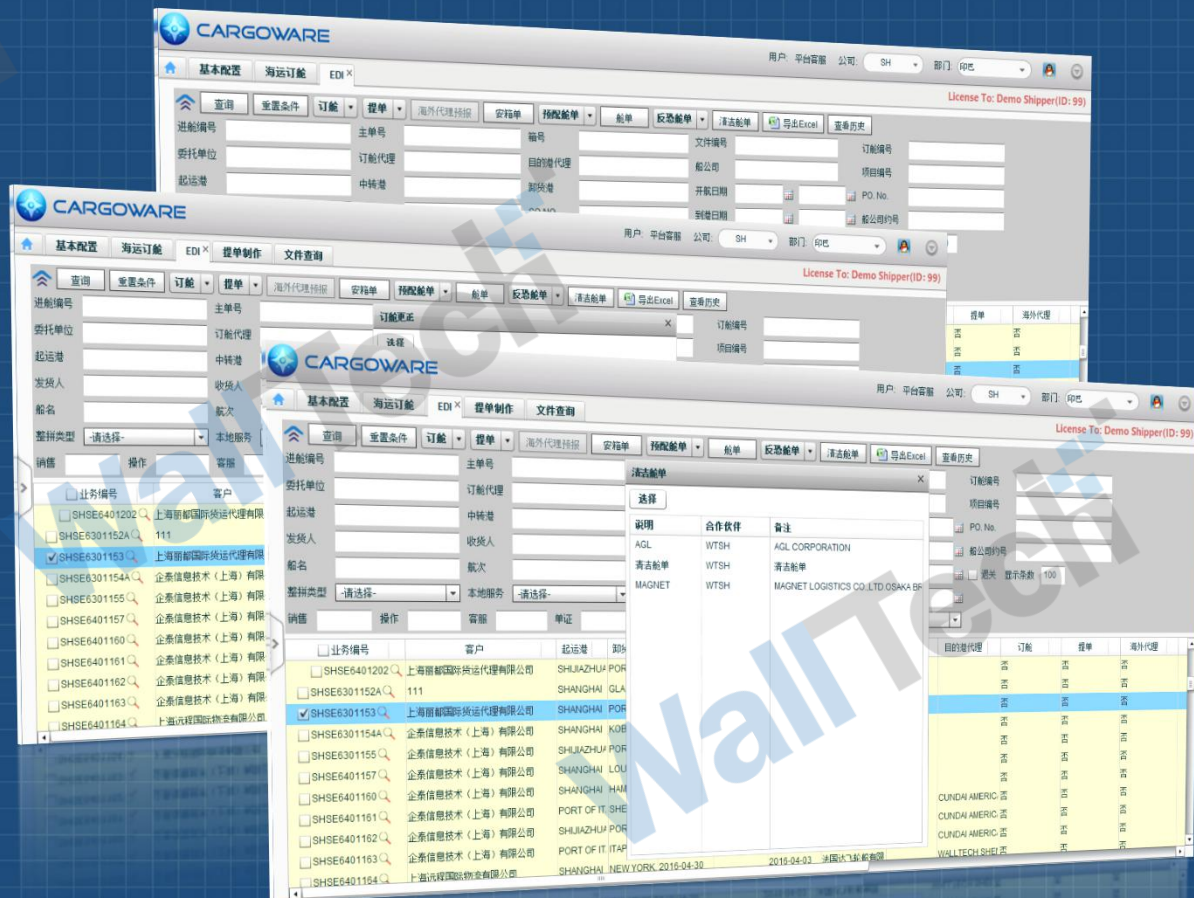


# Exterior Synergy ( EDI Center ) Module



Explore freight forwarding business and exterior synergy with high efficiency through EDI exchange middleware built-in Cargoware:

- One-key EDI operation, largely reduce work load of document position
- Shipping company booking EDI, B/L EDI, overseas agent forecast EDI, container EDI, manifest EDI, counter - terrorism message EDI and clean manifest EDI etc.
- The pre-configured EDI above support all platform users sharing



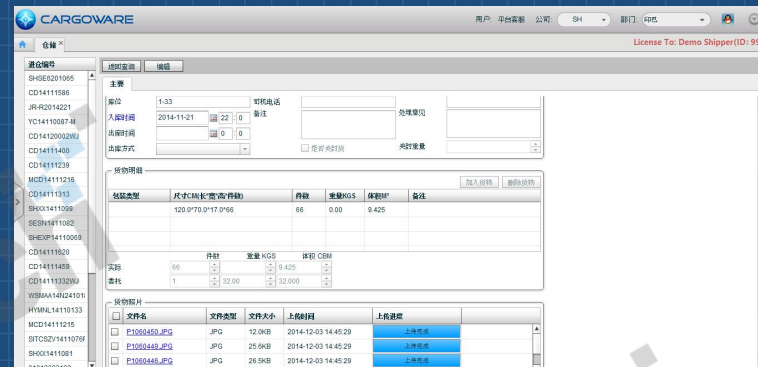


# Exterior synergy API Mode



To support a wider range of interconnection, Cargoware integrate application of the common API specification and interfaces to meet the open system resources and data to specified external system calls, share, realizing extensive systems connection:

- All the subproduct of Cargoare have realized API interconnection
- Satisfy related business collaboration across system calls, sharing of data involved, like warehousing, transportation, customs clearance and overseas agent etc.



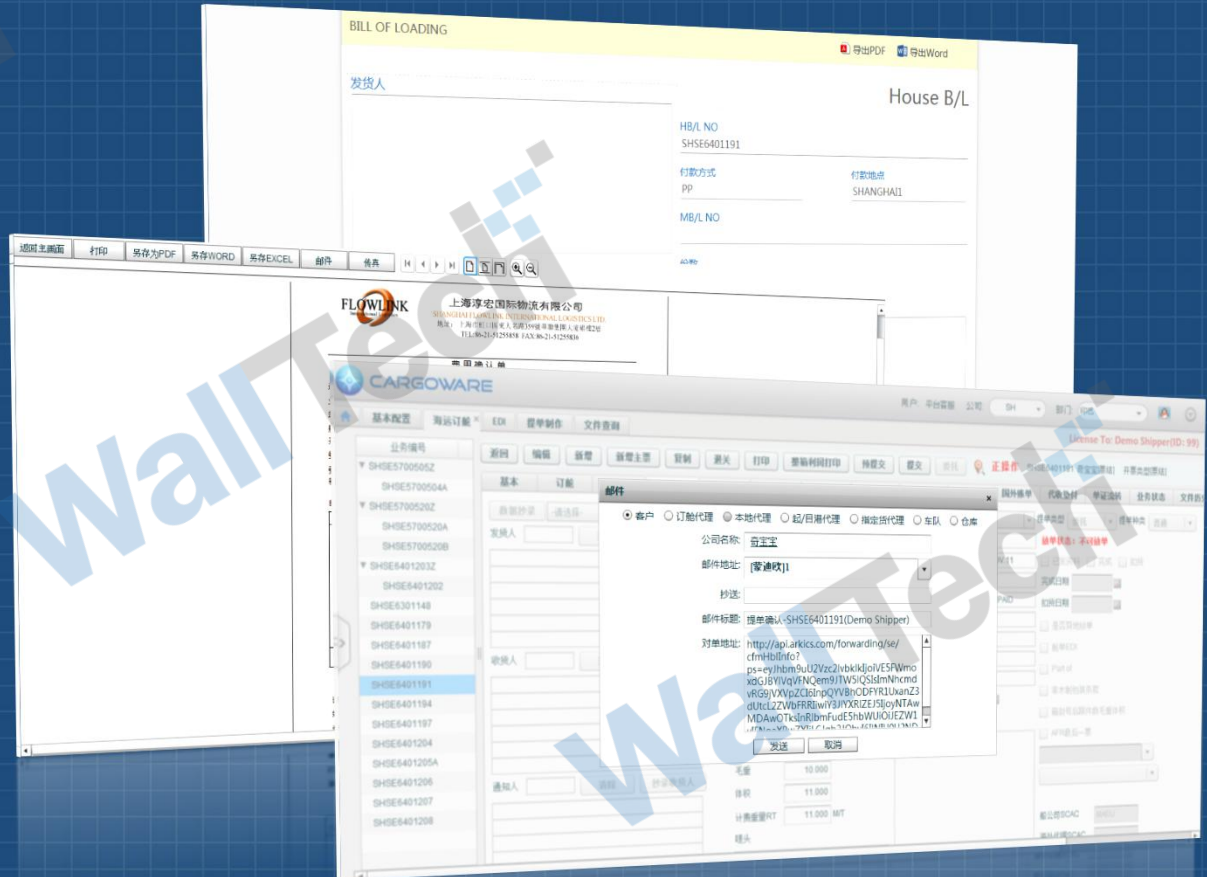


# Exterior synergy ( document sharing, customer reconciliation ) application



Fully implementing the interconnection of Internet, Cargoware realizes online synergic application between freight forwarder and customers and reduces inefficiency maximumly :

- ❑ Customer can directly confirm B/L on platform
- ❑ If need rectify, customer can directly correct on platform
- ❑ System automatically stores all corrected history
- ❑ Customers can query on the platform to all business bills
- ❑ Customers can directly confirmed the account on the platform, accelerating corporate and customer statements





# Whole Business SOP Control and Application

Cargoware supports personalized node control according to freight forwarder operation or service standard setting SOP process:

- Through SOP to facilitate managers master business processing
- Standardized management of employee operation, provides standardized service and improve service quality
- Combine with CargoB2B application, automatically share customer and partner with SOP node information to realize whole business visual serving

The screenshot displays the Cargoware software interface, which is used for managing business processes and status history.

**Top Panel: Business Process Flow**

The top panel shows a timeline of business processes. The current date is 2015-07-16 15:31. The process flow includes the following steps: 客户委托 (Customer Commission), 订舱 (Booking), 进仓 (Inbound), 配箱 (Container Allocation), 提单确认 (Bill of Lading Confirmation), 报关 (Customs Declaration), 进港 (Arrival), 海关申报 (Customs Declaration), 报关放行 (Customs Release), 配船 (Ship Allocation), 费用确认 (Fee Confirmation), 离港 (Departure), 提单签发 (Bill of Lading Issuance), 到港 (Arrival), and 换单 (Exchange).

**Table: Status History**

节点名称	状态名称
订舱	已订舱
派车	已完成
仓库	已入库
报关	已报关
离港	已装船
制单	已电放

**Bottom Panel: Configuration and Management**

The bottom panel shows the configuration and management settings. The left sidebar lists various management modules: 基础管理 (Basic Management), 模板管理 (Template Management), 配置管理 (Configuration Management), 映射管理 (Mapping Management), 业务状态管理 (Business Status Management), 触发类型管理 (Trigger Type Management), 文件类型管理 (File Type Management), 默认值管理 (Default Value Management), 验证规则管理 (Validation Rule Management), and EIM模板管理 (EIM Template Management).

The right sidebar shows the configuration details for a specific module, including fields for 编号 (Number), 代码 (Code), 中文名称 (Chinese Name), 英文名称 (English Name), 状态类型 (Status Type), 触发类型 (Trigger Type), 是否公开 (Is Public), and 报表模板 (Report Template).



# E-Commerce Module

Cargoware relates with CargoB2B to significantly improve the company's service levels and the ability to collaborate with business partners, true integration of business data, in conjunction with external actions, support Chinese and English platform:

- ❑ Online freight
- ❑ Online booking
- ❑ B/L confirmation
- ❑ Cargo Tracking
- ❑ Document Tracking
- ❑ Online reconciliation

2015-07-16 15:31

客户委托 订舱 进仓 配箱 提单确认报关资料 进港 海关申报报关放行港区放行 配船 费用确认 离港 提单签发 到港 换单

### Booking Order

**Shipper (托运人):**  
AAAAAAAAAAAAAAAAAAAAAAAAAAAAAAAA

**consignee (收货人):**  
BBBBBBBBBBBBBBBBBBBBBBBBBBBBBBBB

**Notify (通知人):**  
CCCCCCCCCCCCCCCCCCCCCCCCCCCCCCCC

**Port of Loading (装运港):** SHANGHAI  
**Port of Discharge (目的港):** HONG KONG

**Marks & Nos (唛头):** N/M

**Quantity (数量):** 120  
**Packing (包装):** PALLET



**Description of Goods (品名):** NM

**Gross Weight (毛重):** 300 KGS  
**Measurement (体积):** 0.5CBM

**AMSEEN (ISF):** ☐ **UN No.:**

**Operation Instruction (操作指示):**

**Warehouse:**  
入库日期: 2015-07-16  
2015-07-16

**Trucking (卡车服务):** ☐  
**Files (文件记录):**  
入库照片:  

**Booking Order Details:**

**Order No (订单号):** LCL2015070025  
**Cartridge No (组合号):** HKG00004A

**Job No (工作号):** H05EKG05700044A  
**NBL No (提单号):**

**OP (运费确认/附加费/联系人及联系方式):** 联系人: OG  
**电话:** 传呼:

**Service Term (运单条款):** **Freight Term (运费条款):**

**Cargo Quantity (货量描述):** **Po No (运单编号):**

**ETD (开航日期):** 2015-07-20  
**Carrier (船公司):**

**Place of Delivery (交货地):**

**Plus Service (我们可以为您提供更多):**

**Customs (报关服务):** ☒ **Warehouse:** 入库日期: 2015-07-16  
2015-07-16

**Trucking (卡车服务):** ☐ **Insurance:**

检索查询区

近期最低价格显示区

详细运价查询

查询运价显示区

途中运价详细信息显示区

运价表

航程	目的地	航程代码	20GP	40GP	40HQ	备注
上海	HAMBURG	1-3	\$1750	\$1450	\$1400	航程代码: 1-3
上海	HAMBURG	1-3	\$1800	\$1500	\$1450	航程代码: 1-3
上海	HAMBURG	1-3	\$1900	\$1600	\$1500	航程代码: 1-3
上海	HAMBURG	1-3	\$2000	\$1700	\$1600	航程代码: 1-3
上海	HAMBURG	1-3	\$2100	\$1800	\$1700	航程代码: 1-3
上海	HAMBURG	1-3	\$2200	\$1900	\$1800	航程代码: 1-3
上海	HAMBURG	1-3	\$2300	\$2000	\$1900	航程代码: 1-3
上海	HAMBURG	1-3	\$2400	\$2100	\$2000	航程代码: 1-3
上海	HAMBURG	1-3	\$2500	\$2200	\$2100	航程代码: 1-3
上海	HAMBURG	1-3	\$2600	\$2300	\$2200	航程代码: 1-3
上海	HAMBURG	1-3	\$2700	\$2400	\$2300	航程代码: 1-3
上海	HAMBURG	1-3	\$2800	\$2500	\$2400	航程代码: 1-3
上海	HAMBURG	1-3	\$2900	\$2600	\$2500	航程代码: 1-3
上海	HAMBURG	1-3	\$3000	\$2700	\$2600	航程代码: 1-3
上海	HAMBURG	1-3	\$3100	\$2800	\$2700	航程代码: 1-3
上海	HAMBURG	1-3	\$3200	\$2900	\$2800	航程代码: 1-3
上海	HAMBURG	1-3	\$3300	\$3000	\$2900	航程代码: 1-3
上海	HAMBURG	1-3	\$3400	\$3100	\$3000	航程代码: 1-3
上海	HAMBURG	1-3	\$3500	\$3200	\$3100	航程代码: 1-3
上海	HAMBURG	1-3	\$3600	\$3300	\$3200	航程代码: 1-3
上海	HAMBURG	1-3	\$3700	\$3400	\$3300	航程代码: 1-3
上海	HAMBURG	1-3	\$3800	\$3500	\$3400	航程代码: 1-3
上海	HAMBURG	1-3	\$3900	\$3600	\$3500	航程代码: 1-3
上海	HAMBURG	1-3	\$4000	\$3700	\$3600	航程代码: 1-3
上海	HAMBURG	1-3	\$4100	\$3800	\$3700	航程代码: 1-3
上海	HAMBURG	1-3	\$4200	\$3900	\$3800	航程代码: 1-3
上海	HAMBURG	1-3	\$4300	\$4000	\$3900	航程代码: 1-3
上海	HAMBURG	1-3	\$4400	\$4100	\$4000	航程代码: 1-3
上海	HAMBURG	1-3	\$4500	\$4200	\$4100	航程代码: 1-3
上海	HAMBURG	1-3	\$4600	\$4300	\$4200	航程代码: 1-3
上海	HAMBURG	1-3	\$4700	\$4400	\$4300	航程代码: 1-3
上海	HAMBURG	1-3	\$4800	\$4500	\$4400	航程代码: 1-3
上海	HAMBURG	1-3	\$4900	\$4600	\$4500	航程代码: 1-3
上海	HAMBURG	1-3	\$5000	\$4700	\$4600	航程代码: 1-3
上海	HAMBURG	1-3	\$5100	\$4800	\$4700	航程代码: 1-3
上海	HAMBURG	1-3	\$5200	\$4900	\$4800	航程代码: 1-3
上海	HAMBURG	1-3	\$5300	\$5000	\$4900	航程代码: 1-3
上海	HAMBURG	1-3	\$5400	\$5100	\$5000	航程代码: 1-3
上海	HAMBURG	1-3	\$5500	\$5200	\$5100	航程代码: 1-3
上海	HAMBURG	1-3	\$5600	\$5300	\$5200	航程代码: 1-3
上海	HAMBURG	1-3	\$5700	\$5400	\$5300	航程代码: 1-3
上海	HAMBURG	1-3	\$5800	\$5500	\$5400	航程代码: 1-3
上海	HAMBURG	1-3	\$5900	\$5600	\$5500	航程代码: 1-3
上海	HAMBURG	1-3	\$6000	\$5700	\$5600	航程代码: 1-3
上海	HAMBURG	1-3	\$6100	\$5800	\$5700	航程代码: 1-3
上海	HAMBURG	1-3	\$6200	\$5900	\$5800	航程代码: 1-3
上海	HAMBURG	1-3	\$6300	\$6000	\$5900	航程代码: 1-3
上海	HAMBURG	1-3	\$6400	\$6100	\$6000	航程代码: 1-3
上海	HAMBURG	1-3	\$6500	\$6200	\$6100	航程代码: 1-3
上海	HAMBURG	1-3	\$6600	\$6300	\$6200	航程代码: 1-3
上海	HAMBURG	1-3	\$6700	\$6400	\$6300	航程代码: 1-3
上海	HAMBURG	1-3	\$6800	\$6500	\$6400	航程代码: 1-3
上海	HAMBURG	1-3	\$6900	\$6600	\$6500	航程代码: 1-3
上海	HAMBURG	1-3	\$7000	\$6700	\$6600	航程代码: 1-3
上海	HAMBURG	1-3	\$7100	\$6800	\$6700	航程代码: 1-3
上海	HAMBURG	1-3	\$7200	\$6900	\$6800	航程代码: 1-3
上海	HAMBURG	1-3	\$7300	\$7000	\$6900	航程代码: 1-3
上海	HAMBURG	1-3	\$7400	\$7100	\$7000	航程代码: 1-3
上海	HAMBURG	1-3	\$7500	\$7200	\$7100	航程代码: 1-3
上海	HAMBURG	1-3	\$7600	\$7300	\$7200	航程代码: 1-3
上海	HAMBURG	1-3	\$7700	\$7400	\$7300	航程代码: 1-3
上海	HAMBURG	1-3	\$7800	\$7500	\$7400	航程代码: 1-3
上海	HAMBURG	1-3	\$7900	\$7600	\$7500	航程代码: 1-3
上海	HAMBURG	1-3	\$8000	\$7700	\$7600	航程代码: 1-3
上海	HAMBURG	1-3	\$8100	\$7800	\$7700	航程代码: 1-3
上海	HAMBURG	1-3	\$8200	\$7900	\$7800	航程代码: 1-3
上海	HAMBURG	1-3	\$8300	\$8000	\$7900	航程代码: 1-3
上海	HAMBURG	1-3	\$8400	\$8100	\$8000	航程代码: 1-3
上海	HAMBURG	1-3	\$8500	\$8200	\$8100	航程代码: 1-3
上海	HAMBURG	1-3	\$8600	\$8300	\$8200	航程代码: 1-3
上海	HAMBURG	1-3	\$8700	\$8400	\$8300	航程代码: 1-3
上海	HAMBURG	1-3	\$8800	\$8500	\$8400	航程代码: 1-3
上海	HAMBURG	1-3	\$8900	\$8600	\$8500	航程代码: 1-3
上海	HAMBURG	1-3	\$9000	\$8700	\$8600	航程代码: 1-3
上海	HAMBURG	1-3	\$9100	\$8800	\$8700	航程代码: 1-3
上海	HAMBURG	1-3	\$9200	\$8900	\$8800	航程代码: 1-3
上海	HAMBURG	1-3	\$9300	\$9000	\$8900	航程代码: 1-3
上海	HAMBURG	1-3	\$9400	\$9100	\$9000	航程代码: 1-3
上海	HAMBURG	1-3	\$9500	\$9200	\$9100	航程代码: 1-3
上海	HAMBURG	1-3	\$9600	\$9300	\$9200	航程代码: 1-3
上海	HAMBURG	1-3	\$9700	\$9400	\$9300	航程代码: 1-3
上海	HAMBURG	1-3	\$9800	\$9500	\$9400	航程代码: 1-3
上海	HAMBURG	1-3	\$9900	\$9600	\$9500	航程代码: 1-3
上海	HAMBURG	1-3	\$10000	\$9700	\$9600	航程代码: 1-3

### 我的特价申请

所有特价申请: 126 待审批: 88 底价申请中: 18 已审批: 6 已拒绝: 2 已失效: 12

快速搜索: 开始日期 → 结束日期 → 目的地 → 全部 → 搜索

申请列表

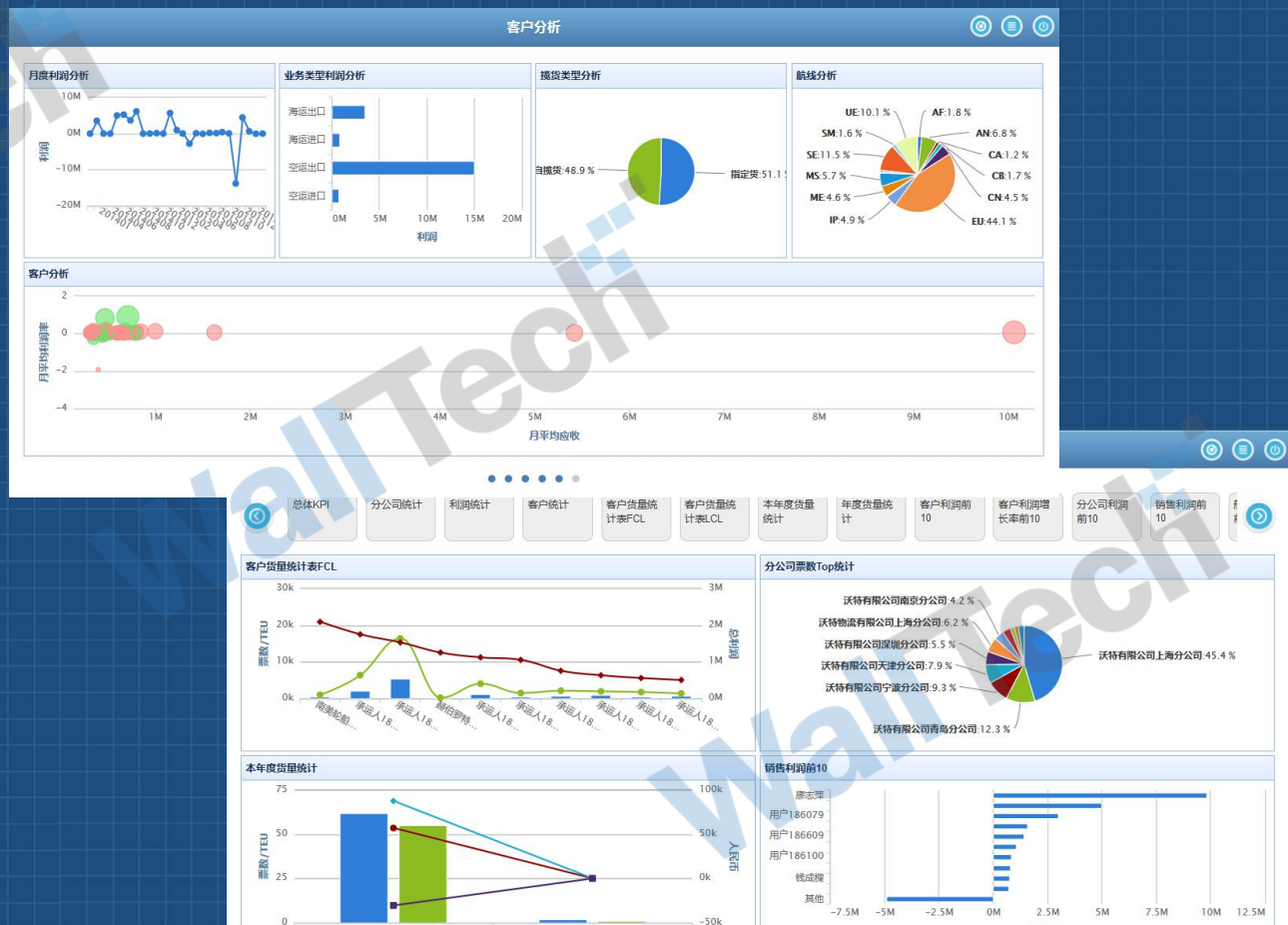
申请号	状态	创建时间	航程	公司	联系人	联系电话	备注
20150500002	待审批	2015-05-14 17:19	上海 → HAMBURG	美商纵横国际货运有限公司	联系人:	联系电话:	申请详细 审批 拒绝
20150500001	已失效	2015-05-07 14:44	上海 → LOS ANGELES	基科学检测公司	联系人:	联系电话:	申请详细




# BI ( Business Intelligence ) Management Module

Cargoware relates application product international logistics BI ( Cargosights ) , which can satisfy real-time control of service and operation data in large and medium freight forwarders to provide reliable data basis and analysis tool for management decision-making:

- Support personalized configuration and display
- Support multi-dimension data perspective
- Support report from comparative analysis in classification
- Support mobile display at IOS end
- Self-service, uncensored configuration application(2D report form) data analysis





A blue and silver commercial airplane is shown from a low angle, flying over a city. Two young boys are sitting on the wing of the plane, looking out over the city. The sky is blue with some clouds. The text "Keep your eyes on the stars, and your feet on the ground." is written in the top right corner.

Keep your eyes on the  
stars, and your feet on  
the ground.

[www.walltechsystem.cn](http://www.walltechsystem.cn)

WallTech